

PAINT KILLER



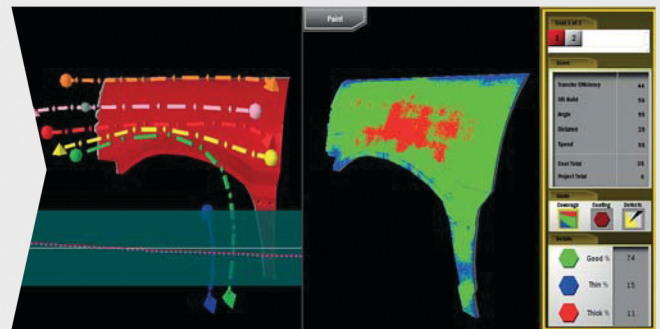


Train painters faster while reducing costs

SimSpray is an immersive **virtual reality painting simulation**. Designed to augment traditional educational methods, it **assists in the teaching** of spray painting and coating fundamentals. Using SimSpray saves on training time and decreases expenses, delivering a «Green» ROI to **training organizations**.



Simulation



Results Analysis

- 💰 Reduces training time and material costs
- 📈 Tracks students performances and improvements
- 👍 Makes training fun
- 🌱 Eliminates environmental impacts

SimSpray is available in two versions* :

	Standard	Industrial
Multi-coat capabilities	○	○
Multiple Languages	○	○
Student reports	○	○
Tracking area	1.5m ²	3m ²
HVLP	○	○
Airless		○
Air-assisted Airless		○
Number of parts available	50	100

*A variety of support and upgrade packages are available for each systems, as well as onsite installation and training.



www.learnvirtual.eu

Developed by



LearnVirtual Europe

Joop Kooij
André Jehee

+ 31 6 53 23 34 89
+ 31 6 22 42 65 60

joop@kooij.biz
learnvirtualeurope@gmail.com

Distributed by:
LearnVirtual Europe
Tel : +36 37 312-598
info@learnvirtual.eu
www.learnvirtual.eu